



# GAT MONTHLY MEMBERSHIP PROGRESS REPORT

Results as of: 1/31/2022

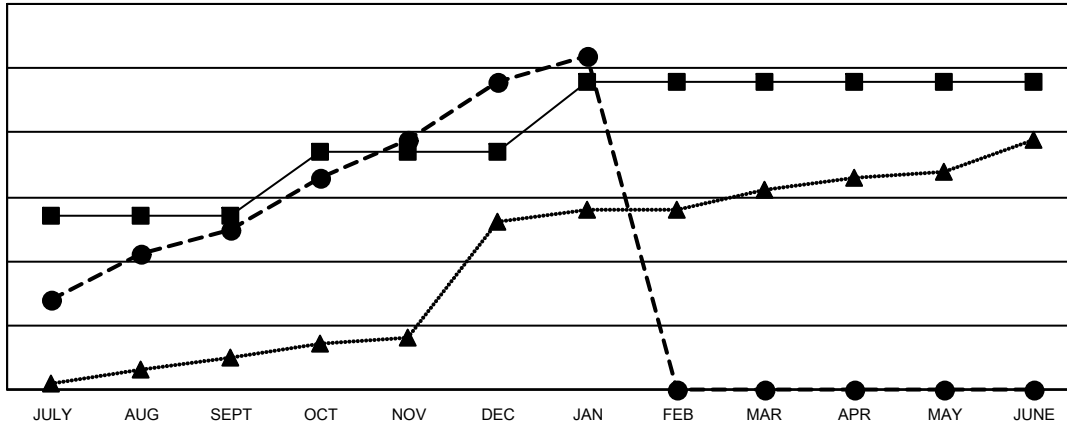
Multiple District 306

LOCATION: REP OF SRI LANKA

Clubs			
RESULTS FOR 2021-2022			
QUARTER	NEW CLUB GOAL	NEW CLUBS	DROPPED CLUBS
JULY/AUG/SEPT	27	25	7
OCT/NOV/DEC	10	23	5
JAN/FEB/MAR	11	4	0
APR/MAY/JUNE	0	0	0

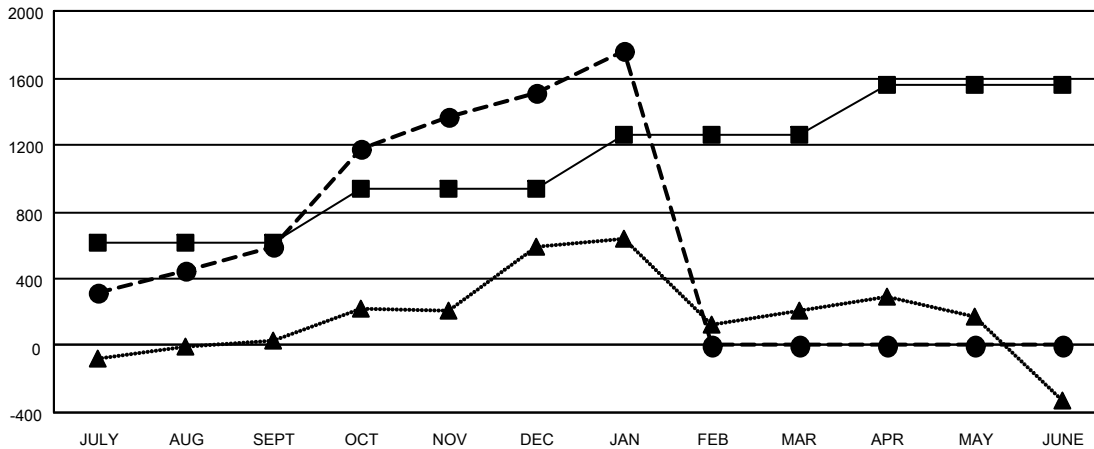
Members			
RESULTS FOR 2021-2022			
QUARTER	MEMBER GROWTH NET GOAL	MEMBER GROWTH ACTUAL	DROPPED MEMBERS ACTUAL (including transfers)
JULY/AUG/SEPT	610	1,135	436
OCT/NOV/DEC	329	1,489	519
JAN/FEB/MAR	324	340	55
APR/MAY/JUNE	290	0	0

GOALS AND ACTUAL NEW CLUBS CUMULATIVE



- - CURRENT YEAR GOALS FOR NEW CLUBS
- - CURRENT YEAR ACTUAL NEW CLUBS
- ▲ - LAST YEAR ACTUAL NEW CLUBS

GOALS AND ACTUAL MEMBERS CUMULATIVE



- - MEMBER GROWTH NET GOAL
- - MEMBER GROWTH ACTUAL
- ▲ - LAST YEAR MEMBERSHIP ACTUAL

DROPPED CLUBS: 12	
<b>DROPPED MEMBERS</b>	
DECEASED	64
CLUB CANCELLED	177
OTHER	770
<b>TOTAL</b>	<b>1,011</b>

356 CLUBS OF 610 ADDED 1 OR MORE NEW MEMBERS

[CLICK HERE FOR CUMULATIVE MEMBERSHIP DATA](#)

GENDER DISTRIBUTION	
MALE	12,097 (74.90%)
FEMALE	4,051 (25.08%)
NON BINARY	0 (0.00%)
PREFER NOT TO ANSWER	2 (0.01%)
<b>TOTAL FAMILY UNIT MEMBERS</b>	<b>5,902</b>
<b>FAMILY MEMBERS PAYING HALF DUES</b>	<b>3,310</b>